





Offers in excess of £350,000

4 Gardener Close

Waterlooville, PO7 7GW

- SEMI-DETACHED HOME
- TWO BATHROOMS
- LOUNGE/DINER
- PARKING FOR FOUR VEHICLES
- THREE BEDROOMS
- MODERN KITCHEN
- CORNER PLOT
- CLOSE TO AMENITIES

Set on a generous corner plot within a modern development, this well-presented three-bedroom, two-bathroom semi-detached home offers spacious and thoughtfully arranged accommodation, along with driveway parking for up to four vehicles. The property is conveniently located within proximity to the town centre, providing easy access to local amenities, transport links, and well-regarded schools.



Upon entering, a welcoming hallway leads through to a modern fitted kitchen, thoughtfully designed with ample worktop and storage space. To the rear, the standout feature of the home is the impressive lounge/diner, enjoying a triple aspect that floods the room with natural light. French doors open directly onto the landscaped garden, creating an excellent space for both everyday living and entertaining.

Upstairs, there are three well-proportioned bedrooms with all featuring fitted built-in wardrobes, with the principal bedroom further complemented by its own en-suite. A contemporary family bathroom serves the remaining bedrooms.

Externally, the property occupies a particularly favourable position with a large, landscaped rear garden featuring a combination of lawn, patio and decking areas, well suited to everyday living and entertaining. To the side a substantial block paved driveway provides off-road parking for up to four vehicles.

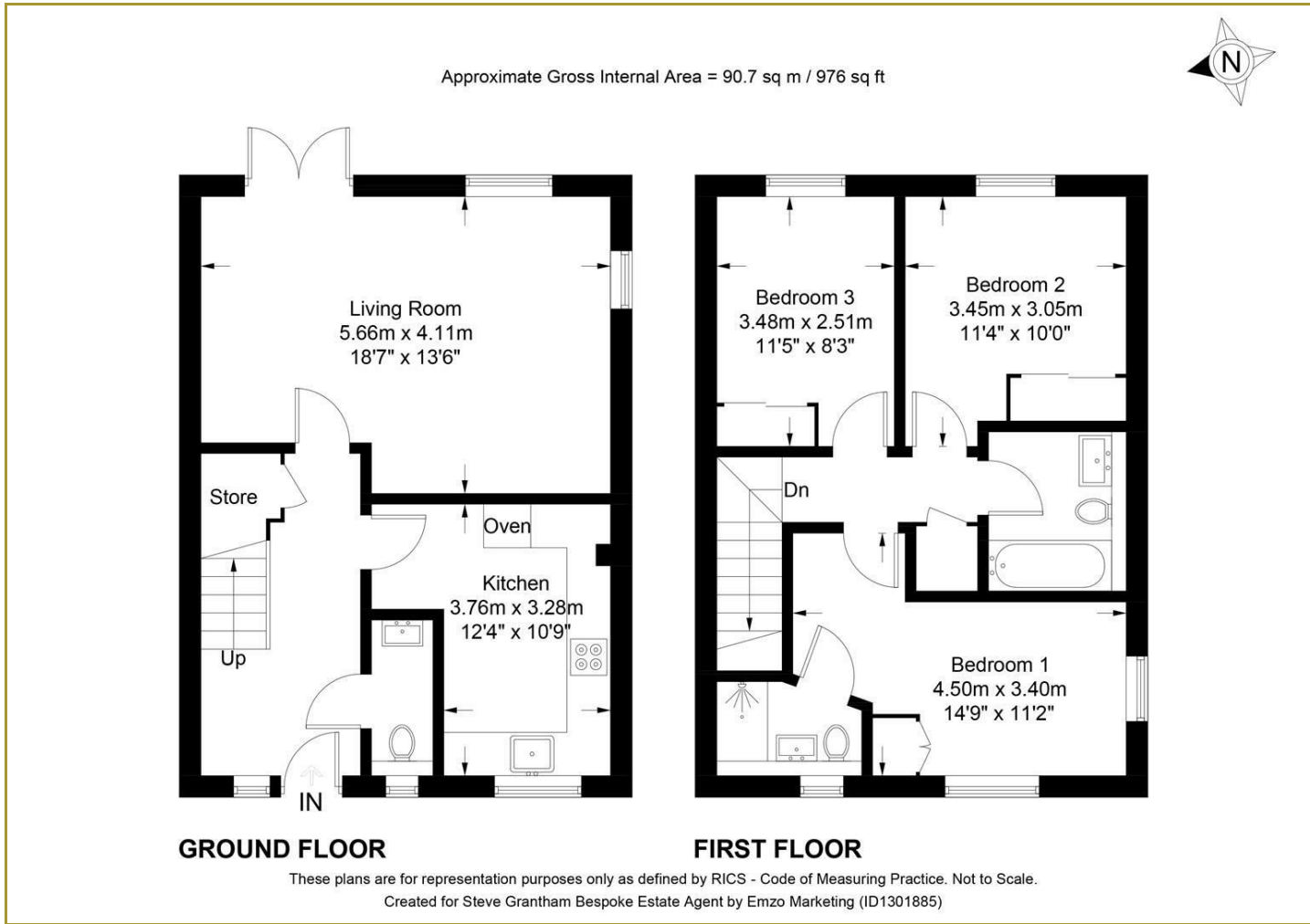
Overall, this is a stylish and low-maintenance home in a sought-after location, offering modern living with excellent outside space.



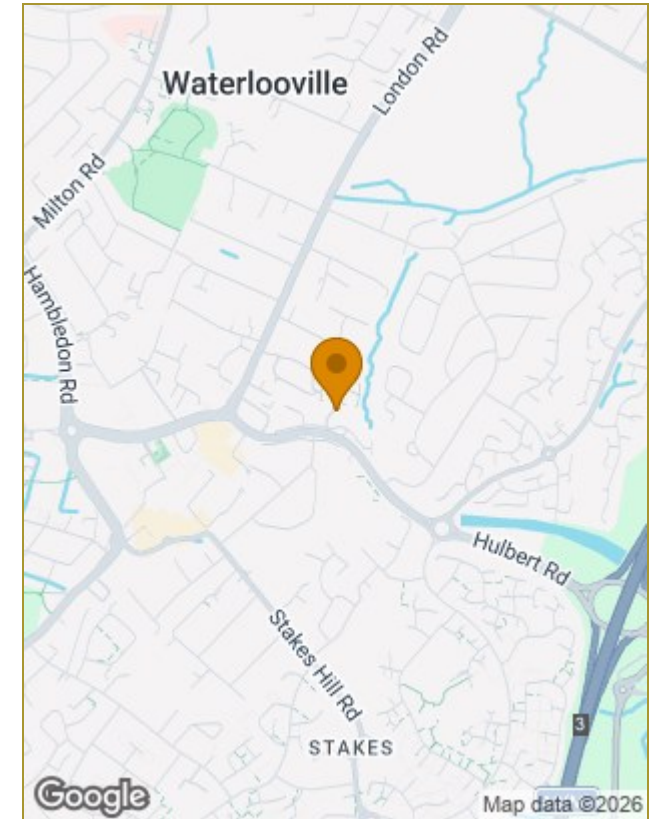




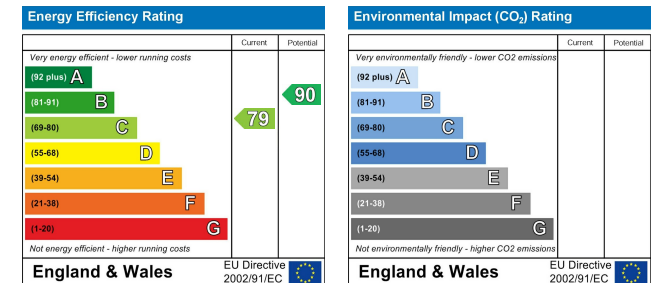
Floor Plans



Location Map



Energy Performance Graph



Should a purchaser(s) have an offer accepted on a property marketed by Steve Grantham Bespoke Estate Agent, they will need to undertake an identification check. This is done to meet our obligation under Anti Money Laundering Regulations (AML) and is a legal requirement. We use a specialist third party service to verify your identity. The cost of these checks is £30 inc. VAT per named purchaser, which is paid in advance, when an offer is agreed and prior to a sales memorandum being issued. This charge is non-refundable under any circumstances.

The particulars are set out as a general outline only for the guidance of intended purchasers or lessees, and do not constitute, any part of a contract. Nothing in these particulars shall be deemed to be a statement that the property is in good structural condition or otherwise nor that any of the services, appliances, equipment or facilities are in good working order. Purchasers should satisfy themselves of this prior to purchasing.